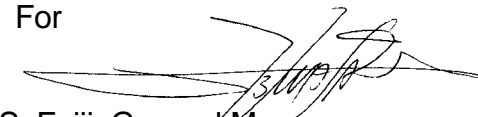


<b>Model</b>	AD3 Finisher	<b>Volt/Hz</b>	<b>Date of Modification</b>	<b>Serial Number</b>
<b>Modified Article</b>	Parts Catalog			
<b>Reason for Modification</b>	Parts Catalog Correction			

Please correct your parts catalog as follows.

Incorrect P/N	Correct P/N	Description	Parts Catalog	
			Index No.	Page
A379 4711	A608 4711	Decal Misfed Removal	20	7

For



S. Fujii, General Manager  
2nd Field Information Dept. QAC

MODEL NAME	V/Hz	DESTINATION	JAPAN PRODUCTION	
			CODE	SERIAL NUMBER
RICOH SR700	120/60	USA, CANADA, S. AMERICA EUROPE, ASIA	A612-17	1st Production
RICOH SR700	220, 230, 240/50, 60	USA, CANADA, S. AMERICA EUROPE, ASIA	A612-22	1st Production
Nashuatec SR700	120/60	USA, CANADA, S. AMERICA EUROPE, ASIA	A612-22	1st Production
Rex Rotary SR700	220,230, 240/50, 60	EUROPE, ASIA	A612-22	1st Production
Savin SR700	120/60	USA	A612-15	1st Production

<b>Model</b>	Finisher for AD3	<b>Volt/Hz</b>	<b>Date of Modification</b>	<b>Serial Number</b>
<b>Modified Article</b>		No serial number cut-in information		
<b>Reason for Modification</b>	Parts catalog correction			

The following should be corrected. Please correct your part catalog.

Old Part Number	New Part Number	Description	Q'ty	Index No.	Page
A6392322	<del>        </del>	Entrance Guide	1	19	7
	A6122329	Guide Mylar	1	19	7

for

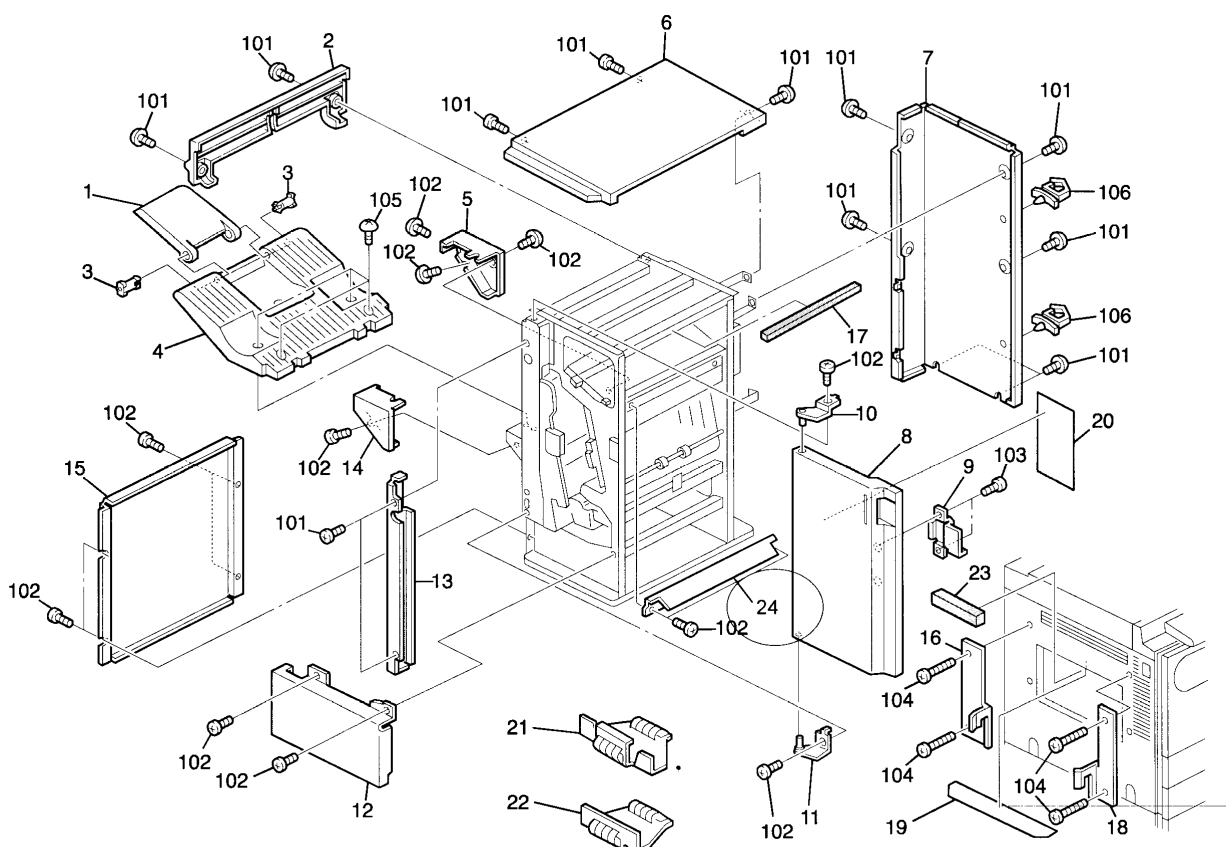


S. Fujii, General Manager  
2nd. Field Information Dept. QAC

Model: Finisher for AD3		Date: 30-Apr-97	No: 3
Modified Article: Lower Cover		Prepared by: E.Fukuyama	
From: QAC 2nd Field Information Dept.		Checked by: S. Fujii	
Reason for Modification:	<input checked="" type="checkbox"/> Parts catalog correction	<input type="checkbox"/> Vendor change	<input type="checkbox"/> To meet standards
	<input type="checkbox"/> To facilitate assembly	<input type="checkbox"/> To improve reliability	( )
	<input type="checkbox"/> Part standardization	<input type="checkbox"/> Other	

The following should be corrected. Please correct your part catalog.

Old part number	New part number	Description	Qty	Index	Page
	A6122412	Entrance Guide Plate	1	24	7
A6124140		Lower Cover	1	12	7
	A6126179	Lower Front Cover	1	12	7



M.Iwasa, Manager  
2<sup>nd</sup> Field Information Dept. QAC

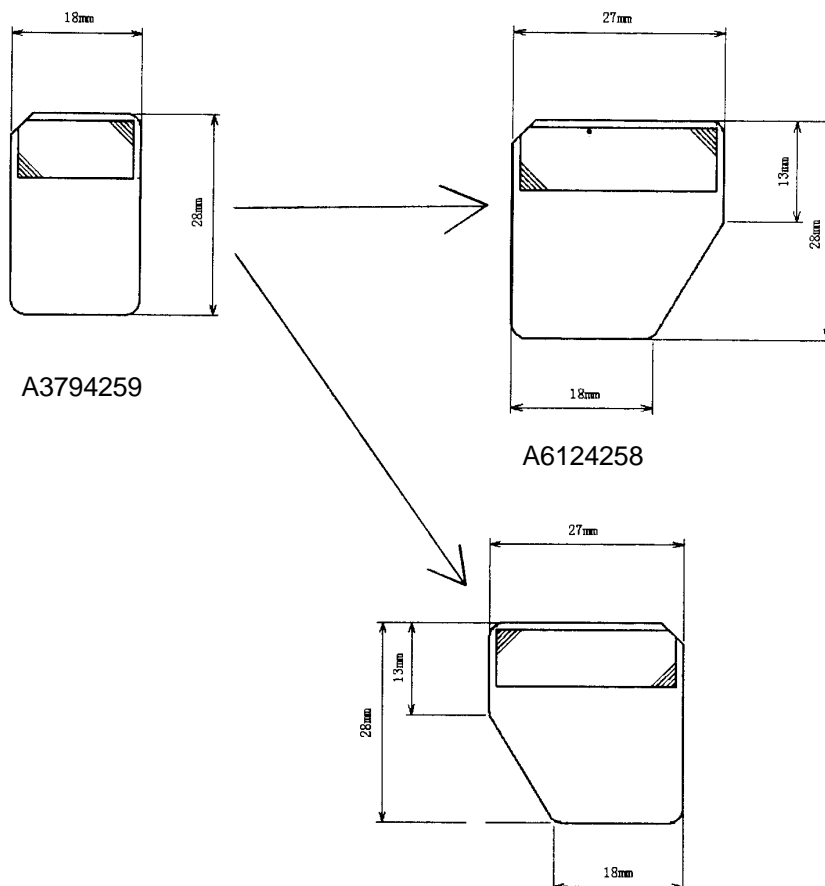




Model: Finisher for AD3		Date: 15-Jun-97	No: 5
Modified Article: Positioning Fence Mylar		Prepared by: E. Fukuyama	
From: QAC 2nd Field Information Dept.			
Reason for Modification:	<input type="checkbox"/> Parts catalog correction	<input type="checkbox"/> Vendor change	<input type="checkbox"/> To meet standards
	<input type="checkbox"/> To facilitate assembly	<input checked="" type="checkbox"/> To improve reliability	( )
	<input type="checkbox"/> Part standardization	<input type="checkbox"/> Other	

To improve paper stacking reliability, the shape of the mylar on the Positioning Fence has been changed.

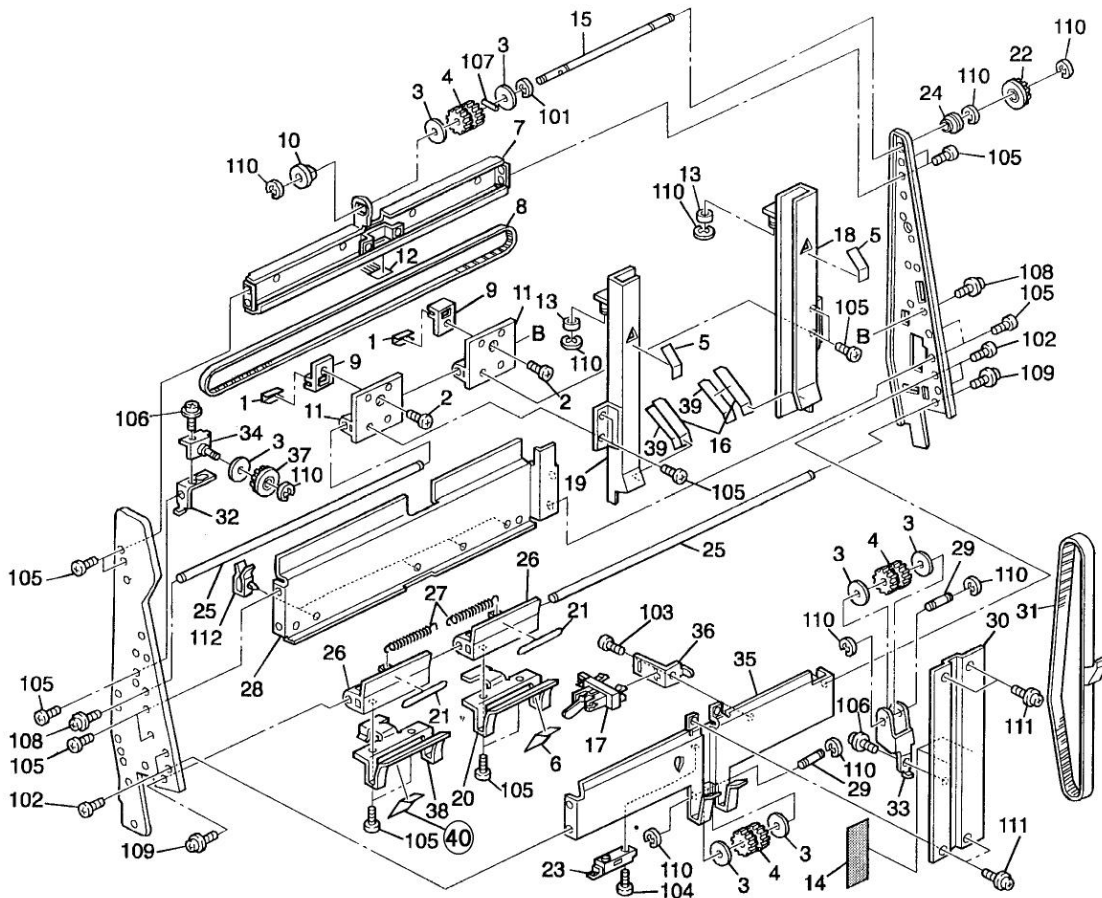
Old part number	New part Number	Description	Qty	Int	Page	Index	Note
A3794259	A6124258	Positioning Fence Mylar : Rear	1	X/O	13	6	
A3794259	A6124259	Positioning Fence Mylar : Front	1	X/O	13	40	



Model: Finisher for AD3

Date: 15-Jun-97

No: 5



MODEL NAME	V/ Hz	DESTINATION	CODE	SERIAL NUMBER
RICOH SR700	120/ 60	USA, CANADA, S. AMERICA EUROPE, ASIA	A612- 17	A3926070001
Gestetner SR700	240/ 50, 60 220, 230,	USA, CANADA, S. AMERICA EUROPE, ASIA	A612- 22	9336070001
Nashuatec SR700	120/ 60	EUROPE, ASIA USA, CANADA, S. AMERICA	A612- 22	9336070001
Rex Rotary SR700	240/ 50, 60 220,230,	EUROPE, ASIA	A612- 22	9336070001
Savin SR700	120/ 60	USA	A612- 15	3A86070001



Model: Finisher for the AD3		Date: 31-July-97	No: 6
Modified Article: Position Roller Shaft		Prepared by: E. Fukuyama	
From: QAC 2nd Field Information Dept.			
Reason for Modification:	<input type="checkbox"/> Parts catalog correction	<input type="checkbox"/> Vendor change	<input type="checkbox"/> To meet standards
	<input type="checkbox"/> To facilitate assembly	<input type="checkbox"/> To improve reliability	( )
	<input type="checkbox"/> Part standardization	<input type="checkbox"/> Other	

Old part number	New part Number	Description	Qty	Int	Page	Index	Note
A3003854	A6122815	Position Roller Shaft	1		17	2	1

This information was issued previously in MB #15 for the AD3. However, this parts catalog correction is for the AD3 finisher. Therefore, please disregard MB #15 for the AD3.



Model: Finisher for the AD3		Date: 30-Sep-97	No: 8
Modified Article: Entrance Guide		Prepared by: E.Fukuyama	
From: QAC 2nd Field Information Dept.			
Reason for Modification:	<input type="checkbox"/> Parts catalog correction	<input type="checkbox"/> Vendor change	<input type="checkbox"/> To meet standards
	<input type="checkbox"/> To facilitate assembly	<input type="checkbox"/> To improve reliability	( )
	<input type="checkbox"/> Part standardization	<input checked="" type="checkbox"/> Other	

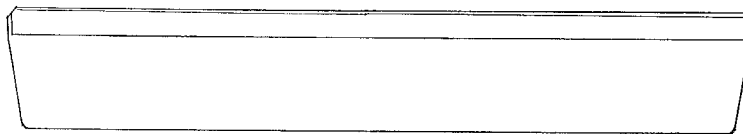
We would like to inform you of the modification in shape of the Entrance Guide that is packed with the Finisher.

**Reason for Modification**

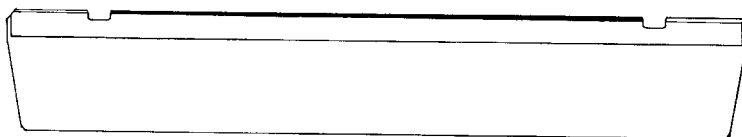
When the Entrance Guide is installed in the Main Frame, it came in contact with the heads of some screws in the Main Frame, causing installation problems.

**Details of the Modification**

Two parts of the Entrance Guide have been cut away to prevent this part from coming in contact with screws in the Main Frame during installation.



Old Entrance Guide



New Entrance Guide

Note: This modification was implemented in the June~September 97 production run units.

The Entrance Guide was modified again from the September 97 production run.

Old part number	New part Number	Description	Qty	Int	Page	Index	Note
A6122329	A6122331	Entrance Guide	1	O/O	7	19	

Model: Finisher for the AD3

Date: 30-Sep-97

No: 8

MODEL NAME	DESTINATION	JAPAN PRODUCTION	
		CODE	SERIAL NUMBER
SR700 Savin	USA	A612- 15	3A87050001
SR700	EUR, ASIA, USA, CANADA, S. AMERICA	A612- 17	A3927050001
SR700 Gestetner	EUR, ASIA, USA, CANADA, S. AMERICA	A612- 22	9337050001
SR700 Infotec	EUROPE	A612- 26	3J00570001

## MB Correction

Reissue date: **31-Oct-97**

The items in bold italic have been corrected.

Model: Finisher for the AD3		Date: 30-Sep-97	No: 9
Modified Article: Entrance Guide		Prepared by: E.Fukuyama	
From: QAC Field Information Dept.			
Reason for Modification:	<input type="checkbox"/> Parts catalog correction	<input type="checkbox"/> Vendor change	<input type="checkbox"/> To meet standards
	<input type="checkbox"/> To facilitate assembly	<input type="checkbox"/> To improve reliability	( )
	<input type="checkbox"/> Part standardization	<input checked="" type="checkbox"/> Other	

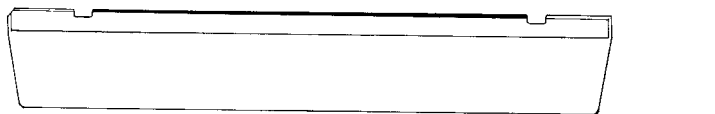
We would like to inform you of the modification to the shape of the Entrance Guide packed with the Finisher.

### Reason for Modification

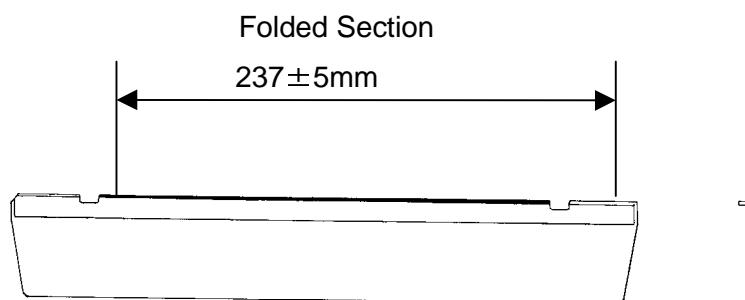
The Entrance Guide bends easily, so it is difficult to install on the Main Frame.

### Details of the Modification

To increase the strength of the Entrance Guide (mylar), the edges have been folded.



Old Entrance Guide



New Entrance Guide

Old Part Number	New Part Number	Description	Qty	Int	Page	Index	Note
<b><i>A6122331</i></b>	A6122333	Entrance Guide	1	X/O	7	19	

Model: Finisher for the AD3

Date: 30-Sep-97

No: 9

MODEL NAME	DESTINATION	JAPAN PRODUCTION	
		CODE	SERIAL NUMBER
SR700 Savin	USA	A612- 15	3A87090001
SR700	EUR ASIA, USA, CANADA, S. AMERICA	A612- 17	A3927090655
SR700 Gestetner	EUR ASIA, USA, CANADA, S. AMERICA	A612- 22	9337090001
SR700 Infotec	EUROPE	A612- 26	3J010070001

Model: Finisher for AD3		Date: 31-Oct-97	No: 10
Modified Article: Stapler Guide Rail		Prepared by: E.Fukuyama	
From: QAC Field Information Dept.			
Reason for Modification:	<input type="checkbox"/> Parts catalog correction	<input type="checkbox"/> Vendor change	<input type="checkbox"/> To meet standards
	<input type="checkbox"/> To facilitate assembly	<input type="checkbox"/> To improve reliability	( )
	<input checked="" type="checkbox"/> Part standardization	<input type="checkbox"/> Other	

Old part number	New part Number	Description	Qty	Int	Page	Index	Note
A3003732	A6974186	Stapler Guide Rail	1	O/O	15	33	

To standardize with other models, the above mentioned part has been changed.

MODEL NAME	V/ Hz	DESTINATION	JAPAN PRODUCTION	
			CODE	SERIAL NUMBER
RICOH Aficio 400	120/ 60	USA, CANADA, S. AMERICA	A133- 17	/
RICOH Aficio 400	240/ 50, 60 220, 230,	EUROPE, ASIA	A133- 27	
Gestetner 2640E	120/ 60	USA, CANADA, S. AMERICA	A133- 10	
Gestetner 2640E	240/ 50, 60 220,230,	EUROPE, ASIA	A133- 22	
Nashuatec D3640	120/ 60	USA, CANADA, S. AMERICA	A133- 10	
Nashuatec D3640	240/ 50, 60 220,230,	EUROPE, ASIA	A133- 22	
Rex Rotary 8240E	120/ 60	EUROPE	A133- 10	
Infotec 5401	240/ 50, 60 220,230,	EUROPE	A133- 26	
Savin 9940DP	120 / 60	USA	A133- 15	

Model: Finisher for AD3		Date: 15-Jan-98	No: 11
Modified Article: DC Motor		Prepared by: S. Tomoe	
From: QAC Field Information Dept.			
Reason for Modification:	<input checked="" type="checkbox"/> Parts catalog correction	<input type="checkbox"/> Vendor change	<input type="checkbox"/> To meet standards
	<input type="checkbox"/> To facilitate assembly	<input type="checkbox"/> To improve reliability	( )
	<input type="checkbox"/> Part Standardization	<input type="checkbox"/> Other	

Please correct your parts catalog.

Old part number	New part number	Description	Qty	Int	Page	Index	Note
AX050055		DC Motor - DC 9W	1		25	10	
	AX050074	DC Motor - DC 9.9W	1				



## MB Correction

Reissue date: **30-Apr-98**

The MB number has been corrected.

Model: Finisher for AD3		Date: 31-Mar-98	No: 12
Modified Article: Spring - Lock		Prepared by: S.Tomoe	
From: QAC Field Information Dept.			
Reason for Modification:	<input checked="" type="checkbox"/> Parts catalog correction <input type="checkbox"/> Vendor change <input type="checkbox"/> To meet standards		
	<input type="checkbox"/> To facilitate assembly <input type="checkbox"/> To improve reliability                 (      )		
	<input type="checkbox"/> Part standardization <input type="checkbox"/> Other		

The following should be corrected. Please correct your parts catalog.

Old part number	New part number	Description	Qty	Int	Page	Index	Note
59202144	<del>                    </del>	Spring - Lock	1		9 & 11	10 & 5	
	AA063529	Pressure Spring – 14.5mm	1				

Model: Finisher for AD3		Date: 31-Jan-99	No.: 13
Modified Article: Lower Cover		Prepared by: E. Fukuyama	
From: GTSS Field Information Dept			
Reason for Modification:	<input checked="" type="checkbox"/> Parts catalog correction	<input type="checkbox"/> Vendor change	<input type="checkbox"/> To meet standards (      )
	<input type="checkbox"/> To facilitate assembly	<input type="checkbox"/> To improve reliability	
	<input type="checkbox"/> Part standardization	<input type="checkbox"/> Other	

The following should be corrected. Please correct your parts catalog.

Old part number	New part number	Description	Qty	Int	Page	Index	Note
A6124140	A6126179	Lower Cover	1		7	12	



Model: Finisher for AD3		Date: 11-Aug-00	No.: MA612014
Modified Article: DC Motor - 9W		Prepared by: E. Fukuyama	
From: Technical Services Dept., GTS Division			
Reason for Modification:	<input checked="" type="checkbox"/> Parts catalog correction	<input type="checkbox"/> Vendor change	<input type="checkbox"/> To meet standards ( )
	<input type="checkbox"/> To facilitate assembly	<input type="checkbox"/> To improve reliability	
	<input type="checkbox"/> Part standardization	<input type="checkbox"/> Other	

There is a mistake on page 14. The stapler is indicated as item #13, but the motor at the middle near the top of the same page is also #13. Please note the following corrections:

Part number	Description	Q'ty	Page	Index	Note
AJ011010	Stapler – EH-560	1	15	13	
AX050096	DC Motor – 9W	1	15	38	

### 5. STAPLER UNIT 2 (A612)

